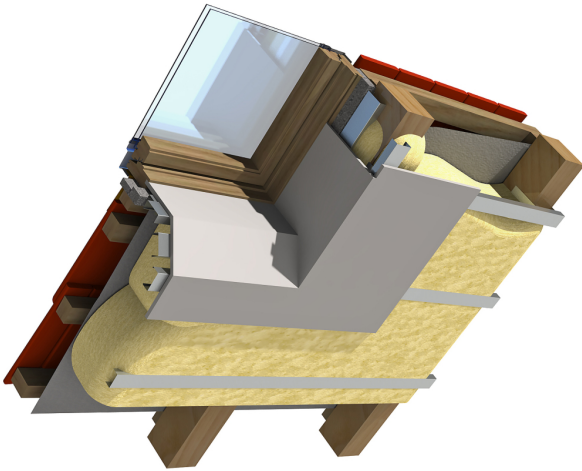


ROOF WINDOW INSULATION - BOTTOM PART

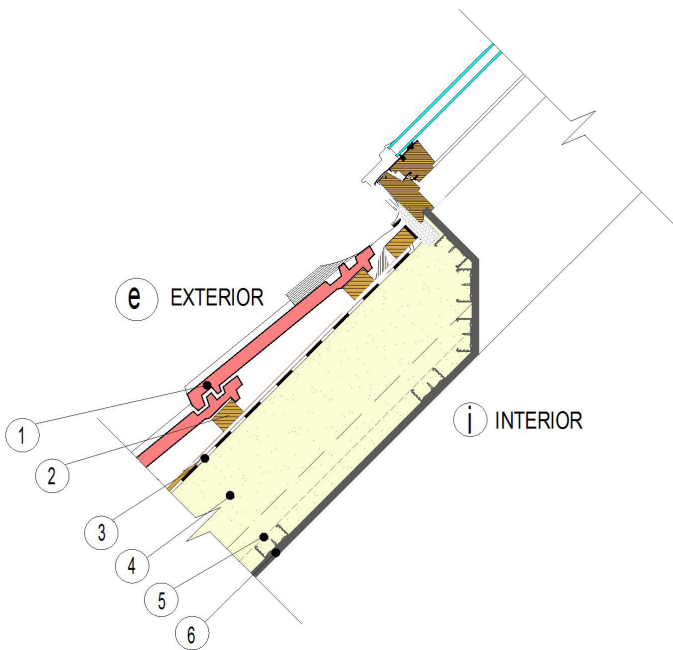


STRUCTURE CHARACTERISTICS:

- PITCHED ROOF WITH BREATHABLE UNDERLAY
- THERMAL INSULATION BETWEEN AND OVER TIMBER RAFTERS
- WITH PLASTERBOARDS
- INTERNAL FINISH
- TIMBER PARTS INVISIBLE FROM INTERIOR
- RENEWABILITY OF EXISTING INSULATION WITHOUT INTERVENTION TO INTERIOR

STRUCTURE ADVANTAGES:

- VAPOUR OPEN
- AIRTIGHT
- SOUND RESISTANCE
- SPEED OF INSTALLATION
- TIMBER PARTS INVISIBLE FROM INTERIOR
- REPLACEMENT OF EXISTING INSULATION WITHOUT INTERVENTION TO INTERIOR



THERMAL TRANSMITTANCE VALUE ACCORDING TO CSN 730540

THERMAL TRANSMITTANCE VALUE ACCORDING TO B.S.EN	0.18
CALCULATED THERMAL TRANSMITTANCE VALUE U [W/m ² K]	
ICYNENE H2FOAM LITE (LDC-50)	0.19
ICYNENE H2FOAM LITE PLUS (LDC-70)	0.18
ICYNENE H2FOAM FORTE (MDR-210)	0.16

TECHNICAL PARAMETERS OF STRUCTURE

LABEL	LAYER	THK. [mm]	DESCRIPTION
1	SLATES/TILES	—	ROOF COVERING
2	BATTEN	—	SUPPORT STRUCTURE BASED ON ROOF COVERING
3	BREATHER MEMBRANE	0.2	WEATHER RESISTANT BARRIER / VAPOUR OPEN PERMEABLE UNDERLAY
4	RAFTER - ICYNENE	140	RAFTER 120/140, 400-600MM CENTRES / THERMAL INSULATION LAYER
5	FURRING CHANNELS -ICYNENE	60	SUPPORTING STRUCTURE / THERMAL INSULATION LAYER
6	PLASTER BOARD	12.5	INTERNAL FINISH