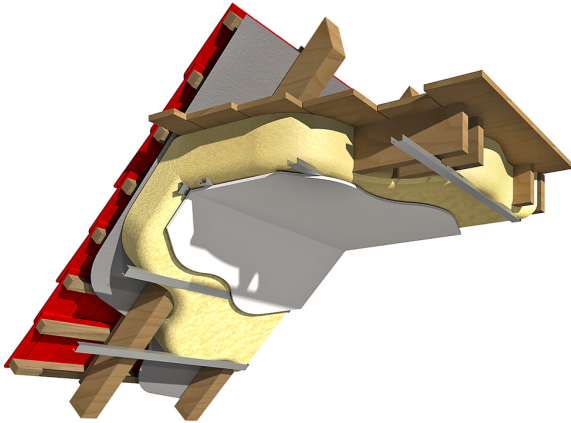


PITCHED ROOF-CEILING JOIST INSULATION

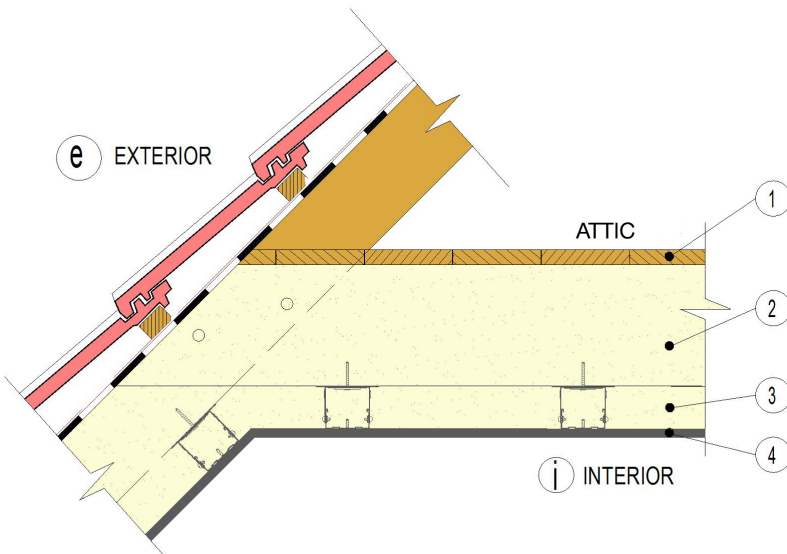


STRUCTURE CHARACTERISTICS:

- PITCHED ROOF WITH BREATHABLE UNDERLAY
- THERMAL INSULATION BETWEEN AND OVER TIMBER RAFTERS.
- WITH PLASTERBOARDS
- INTERNAL FINISH

STRUCTURE ADVANTAGES:

- VAPOUR OPEN
- AIRTIGHT
- SOUND RESISTANCE
- SPEED OF INSTALLATION
- USUALLY TIMBER PARTS INVISIBLE FROM INTERIOR
- REPLACEMENT OF EXISTING INSULATION WITHOUT INTERVENTION TO INTERIOR



THERMAL TRANSMITTANCE VALUE ACCORDING TO B.S.EN.

REQUIRED THERMAL TRANSMITTANCE VALUE U [W/m ² K]	0.18
CALCULATED THERMAL TRANSMITTANCE VALUE U [W/m ² K]	
ICYNENE H2FOAM LITE (LDC-50)	0.19
ICYNENE H2FOAM LITE PLUS (LDC-70)	0.18
ICYNENE H2FOAM FORTE (MDR-210)	0.16

TECHNICAL PARAMETERS OF STRUCTURE

LABEL	LAYER	THK. [mm]	DESCRIPTION
1	OSB BOARD / TIMBER BOARDS	25	WALKABLE LAYER
2	COLLETS / ICYNENE	200	ROOF BEARING STRUCTURE 80/200 / THERMAL INSULATION LAYER
3	FURRING CHANNELS / ICYNENE	60	SUPPORTING STRUCTURE / THERMAL INSULATION LAYER
4	PLASTER BOARD	12.5	INTERNAL FINISH